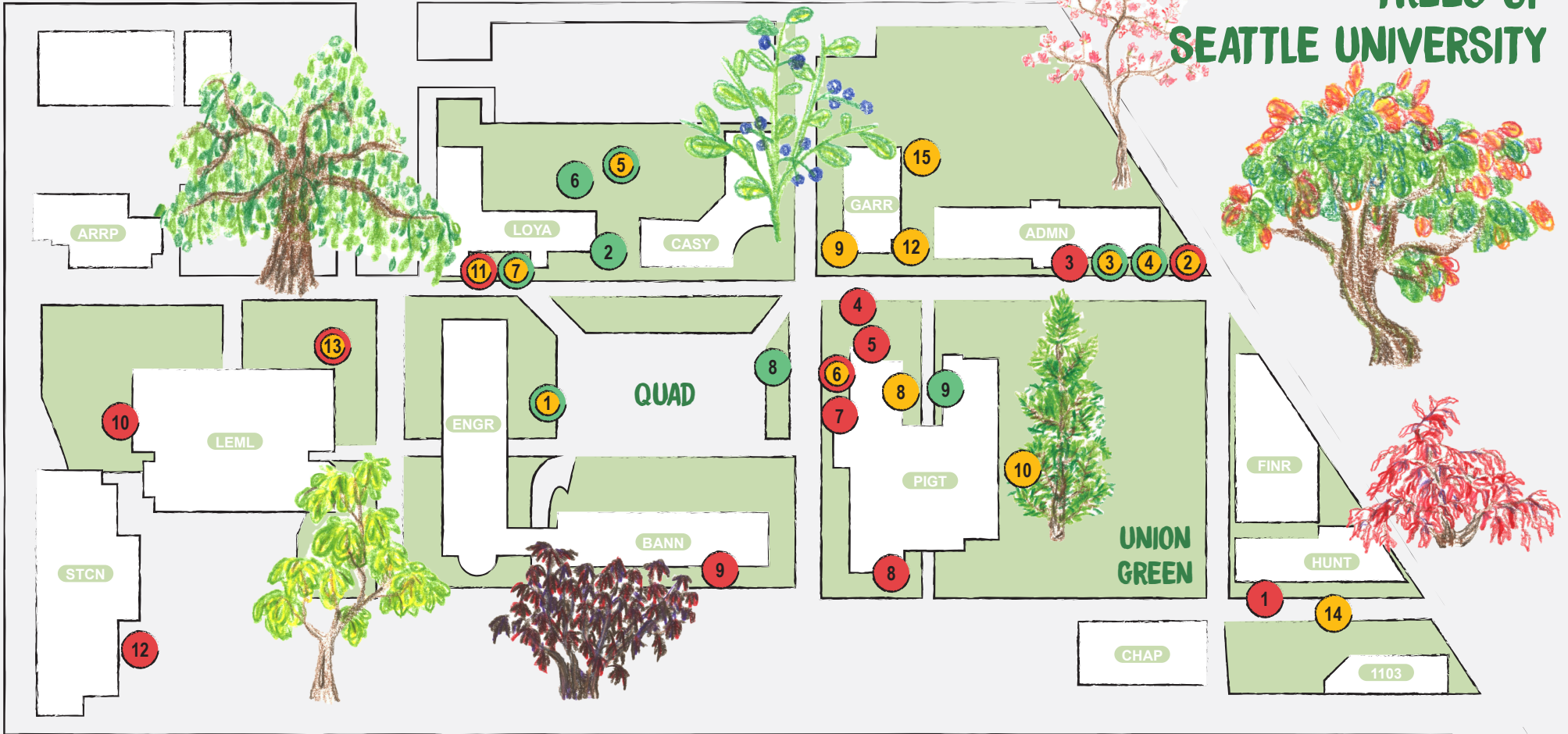


TREES OF SEATTLE UNIVERSITY



EXCEPTIONAL TREES

- 1) Full Moon Maple
- 2) Mugo Pine
- 3) Sargent Magnolia
- 4) Pink Star Magnolia
- 5) Variegated Angelica Tree
- 6) Golden Atlas Cedar
- 7) Little Epaulette Tree
- 8) Chinese Flame Tree
- 9) English Laurel
- 10) Incense Cedar
- 11) Bloodgood Japanese Maple
- 12) Golden Catalpa
- 13) Weeping Beech
- 14) Windmill Palms
- 15) Ponderosa Pine

KUBOTA LEGACY TREES

- 1) Weeping Red Laceleaf Japanese Maple
- 2) Mugo Pine
- 3) Redvein Enkianthus
- 4) Weeping Giant Sequoia
- 5) Copper Beech
- 6) Golden Atlas Cedar
- 7) Giant Sequoia
- 8) Japanese Red Pine
- 9) Red Oak

CISCOE LEGACY TREES

- 1) Full Moon Maple
- 2) Tasmanian Pencil Pine
- 3) Sargent Magnolia
- 4) Pink Star Magnolia
- 5) Variegated Angelica Tree
- 6) Japanese Maple
- 7) Little Epaulette Tree
- 8) Grosser's Stripe Bark Maple
- 9) Mount Omei Dogwood



This map is only a sampling of the many iconic trees that grace the campus grounds. Three categories distinguish these trees:

Exceptional Trees are large specimens, have a unique form, or are an unusual variety. Some of these trees might also fall into one of the other categories.

Kubota Legacy Trees were planted by the Kubota family, most notably Fugitaro Kubota, from the 1950's through the 2000's. Fugitaro Kubota was responsible for several extraordinary landscapes on the campus created on the campus during the 1950's and 1960's.

Ciscoe Legacy Trees were planted by or associated with Ciscoe Morris, SU Grounds Manager during the 1980's through the 2000's. Ciscoe was a pioneer in organic landscape management and a well-loved figure on campus.

Building Legend:

ARRP Arrupe

LEML Lemieux Library & Learning Commons

STCN Student Center

LOYA Loyola Hall

ENGR Engineering

CASY Casey

BANN Bannon

GARR Garrand

PIGT Pigott

ADMN Administration

CHAP Chapel of St Ignatius

FINR Fine Arts

HUNT Hunthausen Hall

1103 1103 E. Madison



*The wonder is that we can see
these trees and not wonder more.*

Ralph Waldo Emerson

www.seattleu.edu/grounds/

www.seattleu.edu/cejs/

www.kubotagarden.org

www.ciscoe.com

This brochure was produced through a collaboration between SU Grounds & Landscaping and SU Center for Environmental Justice & Sustainability in celebration of Arbor Day 2018. Hand drawn images of the trees and map design by Alyssa Lau, intern at Center for Environmental Justice & Sustainability. Yolanda Cieters, Shannon Britton, and Janice Murphy contributed to the creation of this map.

TREES OF SEATTLE UNIVERSITY



A self-guided map identifying
significant trees on the Seattle
University campus.